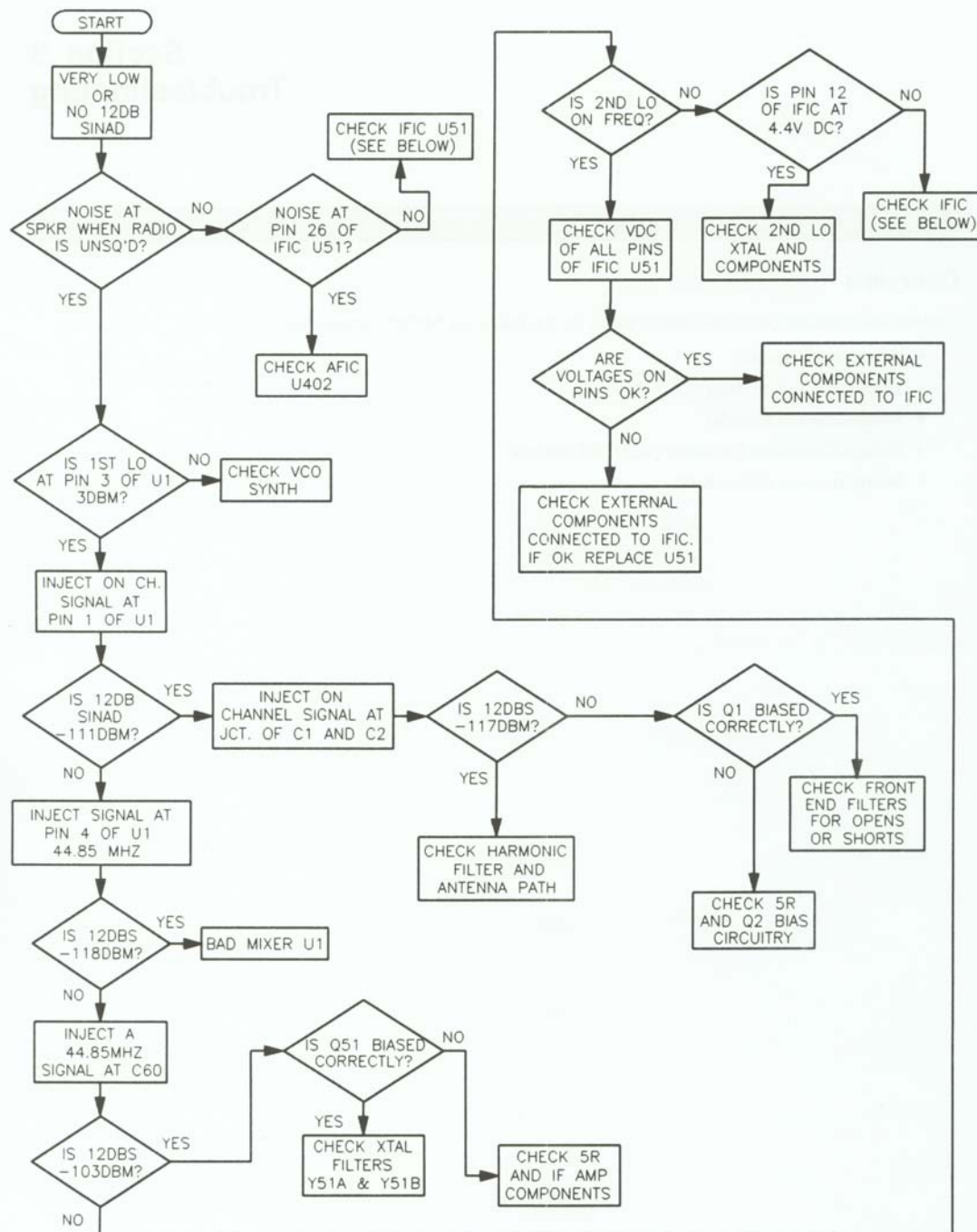


Section 3 Troubleshooting

Overview

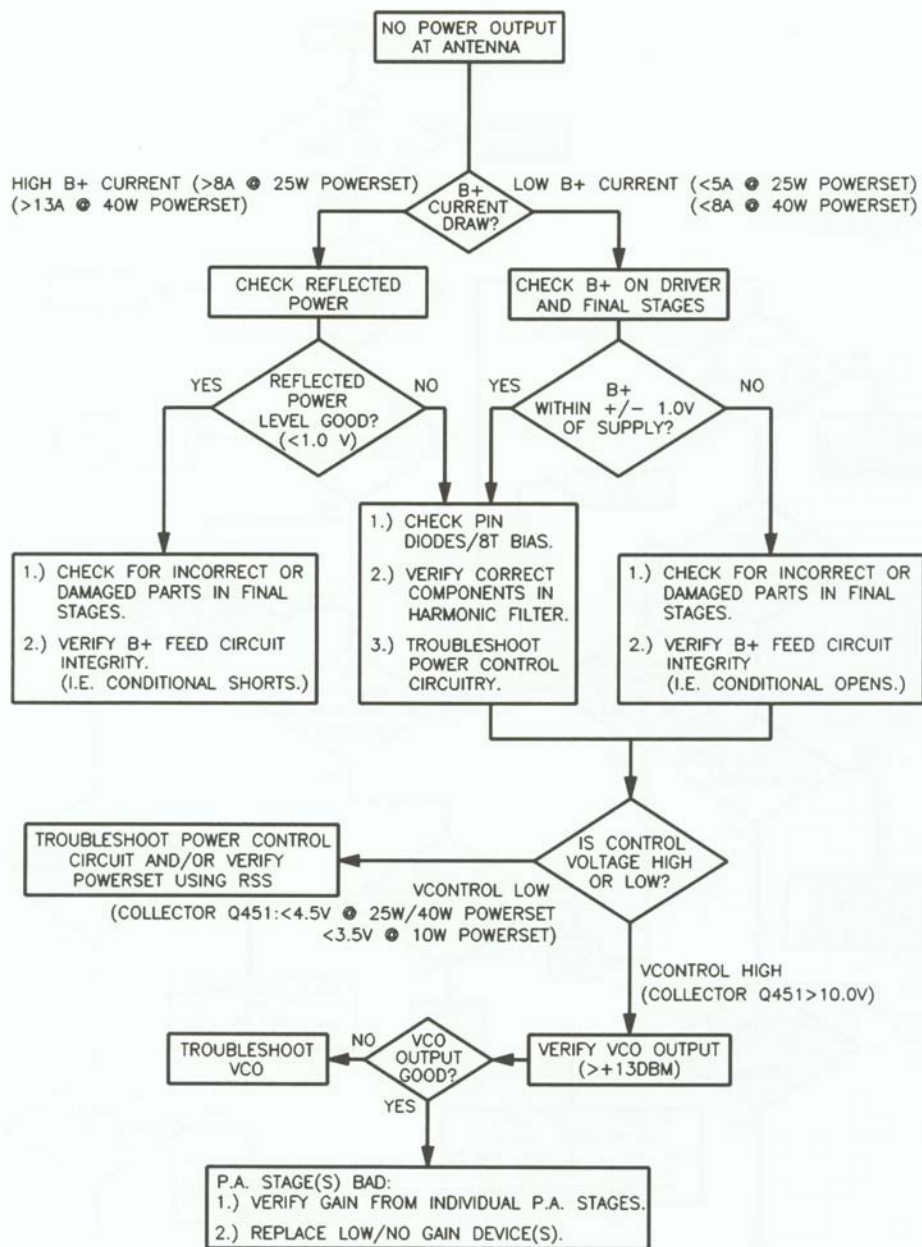
This section contains 5 troubleshooting tables for the following M1225 components:

- Receiver (all models)
- Transmitter (all models)
- Synthesizer (all models)
- Voltage Controlled Oscillator (VCO) (all models)
- Microprocessor (all models)



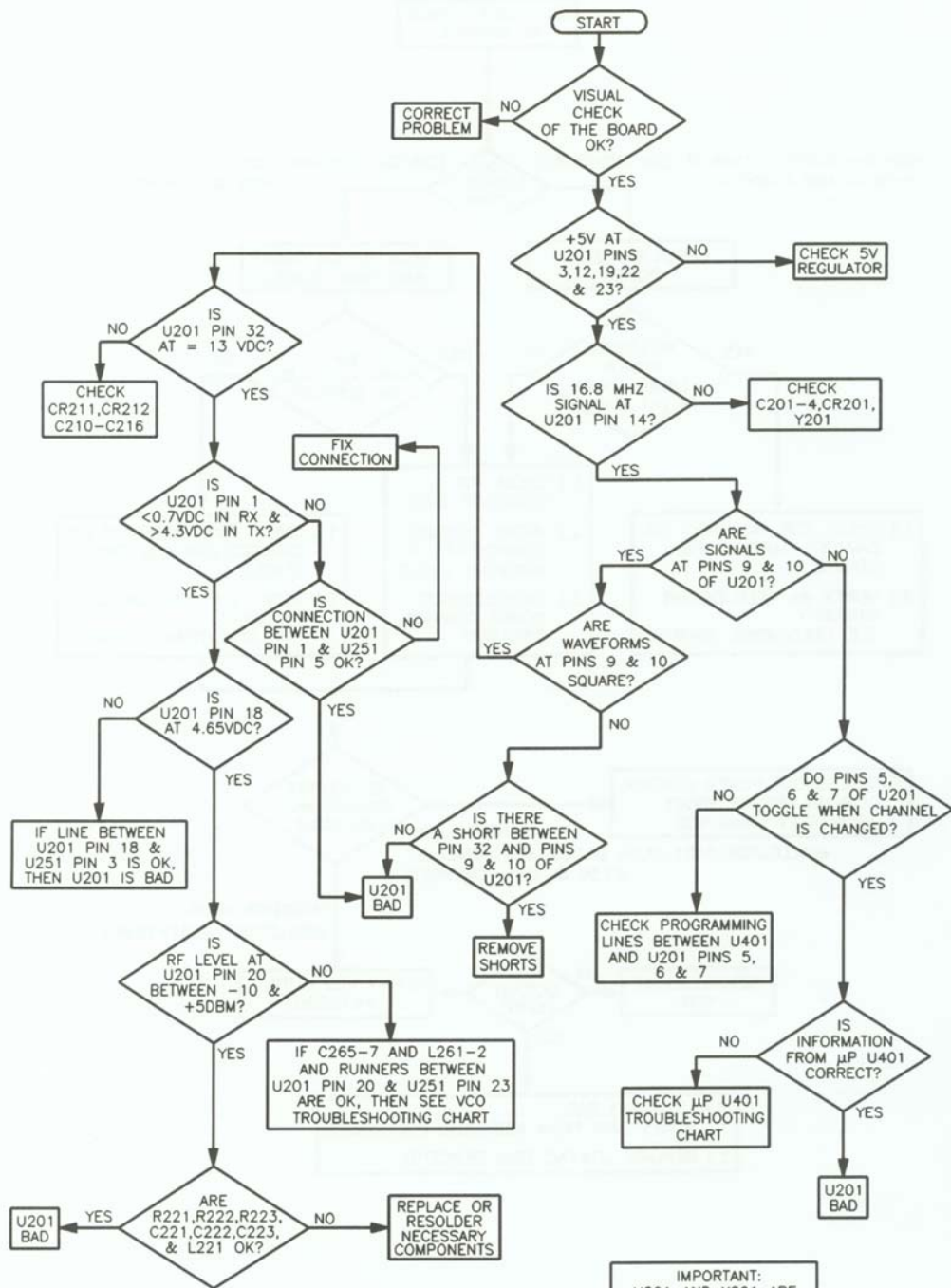
Troubleshooting Flow Chart
for Receiver (All Models)

RPD-97108-0



RPD-95104-0

Troubleshooting Flow Chart
for Transmitter (All Models)



RPD-95106-0

Troubleshooting Flow Chart
for Synthesizer (All Models)